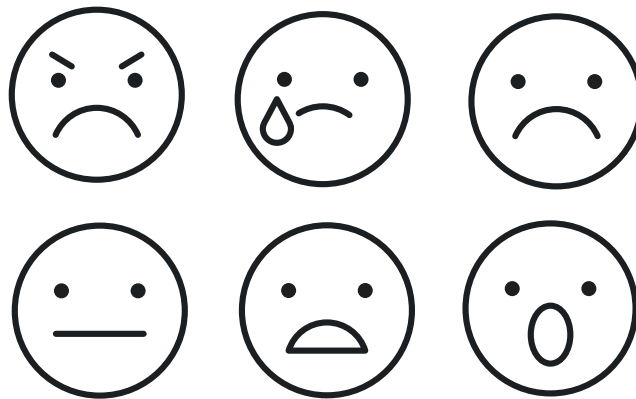


1 How do bullies make you feel? Color.



2 Listen to the song. Circle the correct word.



There´s a bully **running** / **walking** the halls
 And he **looks like** / **thinks** he´s ten feet tall
 He **walks** / **talks** so tough
 He **likes** / **looks** so cool
 He thinks he **rules** / **runs** the school.

3 Match the words that sound the same.

1 cool	A right
2 hall	B say
3 fight	C you
4 away	D tall
5 walk	E talk
6 clue	F school

**Extra: Can you think of other words that sound the same?
 For example: cool – rule.**

.....

1 How tall are they in centimeters? Look at the chart. Write.

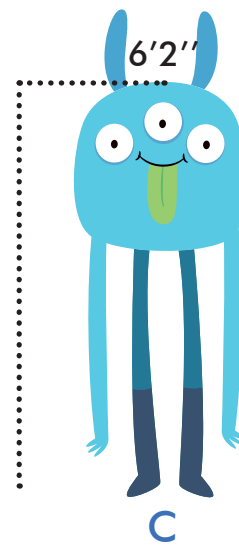
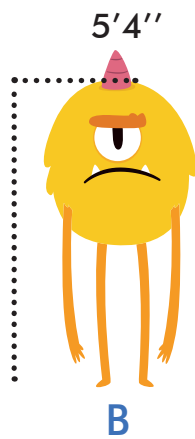
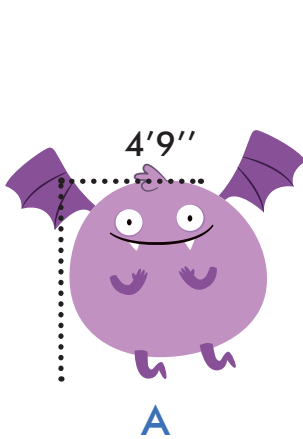
Height (feet and inches)	Height (centimeters)
4'8''	142.2
4'9''	144.8
5'0''	152.4
5'1''	154.9
5'2''	157.5
5'3''	160
5'4''	162.2
5'5''	165.1
5'6''	167.6
5'7''	170.2
5'8''	172.7
5'9''	175.3
6'0''	182.9
6'1''	185.4
6'2''	188
6'3''	190.5

In the United States, they measure height in feet and inches, not centimeters.

1 foot = 30.48 centimeters.

For someone who is 4'10'' tall, we say: Four feet, ten inches tall.

- 1 A is centimeters tall.
- 2 B is centimeters tall.
- 3 C is centimeters tall.
- 4 D is centimeters tall.
- 5 C is **taller** / **shorter** than A.
- 6 D is **taller** / **shorter** than B.



2 Investigation time!

How tall are you? Find out! I'm centimeters tall.

How tall are you in feet and inches? I'm feet, inches tall.

Remember: 145.8 = one hundred forty-five **point** eight.



Worksheet A

1 Activity 1 Answers:

Personal answers

2 Activity 2 Answers:

walking, thinks, talks, looks, rules

3 Activity 3 Answers:

1F, 2D, 3A, 4B, 5E, 6C

Worksheet B

1 Activity 1 Answers:

1) $4'9'' = 144.8$ cms; 2) $5'4'' = 162.2$ cms; 3) $6'2 = 188$ cms;
4) $5'2 = 157.5$ cms 5) taller than 6) shorter than.

2 Activity 2 Answers:.

Personal answers