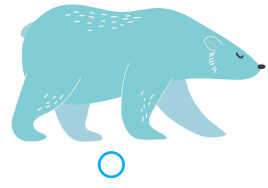
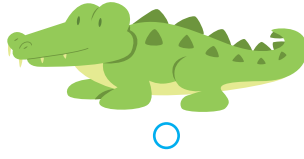
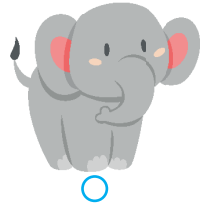


1 Match.



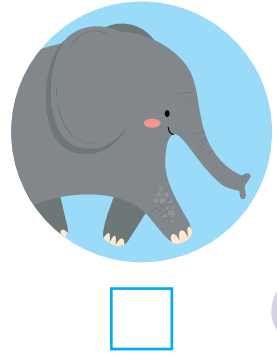
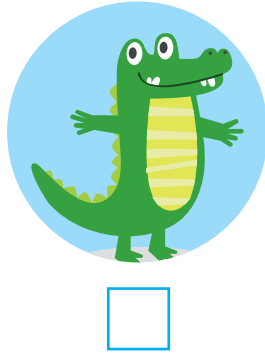
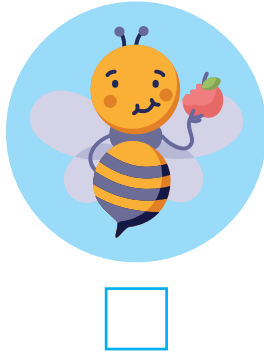
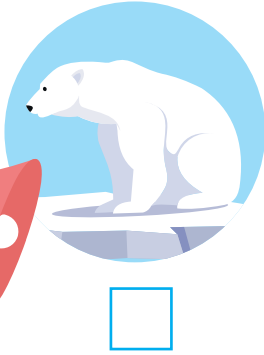
crocodile

polar bear

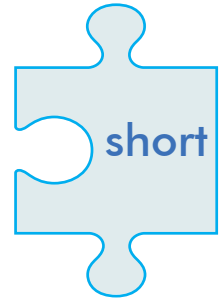
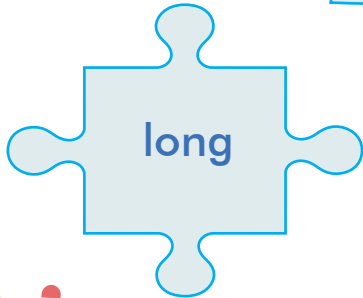
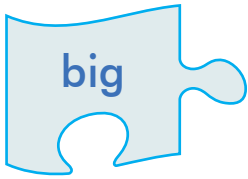
elephant

bumblebee

2 Listen to the song. Number the animals in the correct order.



3 Match the opposites.




1 Find and circle the words from the song in the puzzle. Write the words in the correct column.

long - big - crocodile - small - polar bear
strong - elephant - bumblebee

L	O	N	G	Z	Y	B	I	G
C	R	O	C	O	D	I	L	E
X	W	H	S	M	A	L	L	B
P	O	L	A	R	B	E	A	R
Y	A	S	T	R	O	N	G	K
E	L	E	P	H	A	N	T	Z
B	U	M	B	L	E	B	E	E

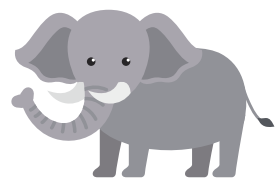
animals	adjective
	big

2 Listen to the song. Complete the lines with words from Activity 1.



It's a

It's very




It's an

It's very



It's a

It's very



It's a

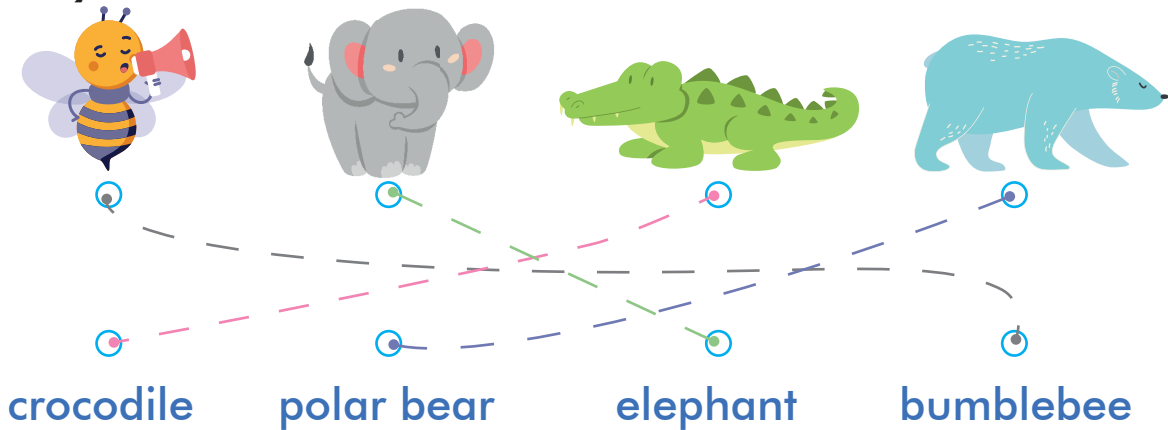
It's very

3 Read and draw.

something very small	something very big	something very long

Worksheet A

1 Activity 1 Answers:



2 Activity 2 Answers:

1 bumblebee, 2 crocodile, 3 elephant, 4 polar bear

3 Activity 3 Answers:.

big/small, strong/weak, long/short

Worksheet B

1 Activity 1 Answers:

L	O	N	G	Z	Y	B	I	G
C	R	O	C	O	D	I	L	E
X	W	H	S	M	A	L	L	B
P	O	L	A	R	B	E	A	R
Y	A	S	T	R	O	N	G	K
E	L	E	P	H	A	N	T	Z
B	U	M	B	L	E	B	E	E

Animals: crocodile, polar bear, elephant, bumblebee

Adjectives: long, big, small, strong

2 Activity 2 Answers:.

bumblebee/small; crocodile/long; elephant/big; polar bear/strong

3 Activity 3 Answers:.

Personal answers